

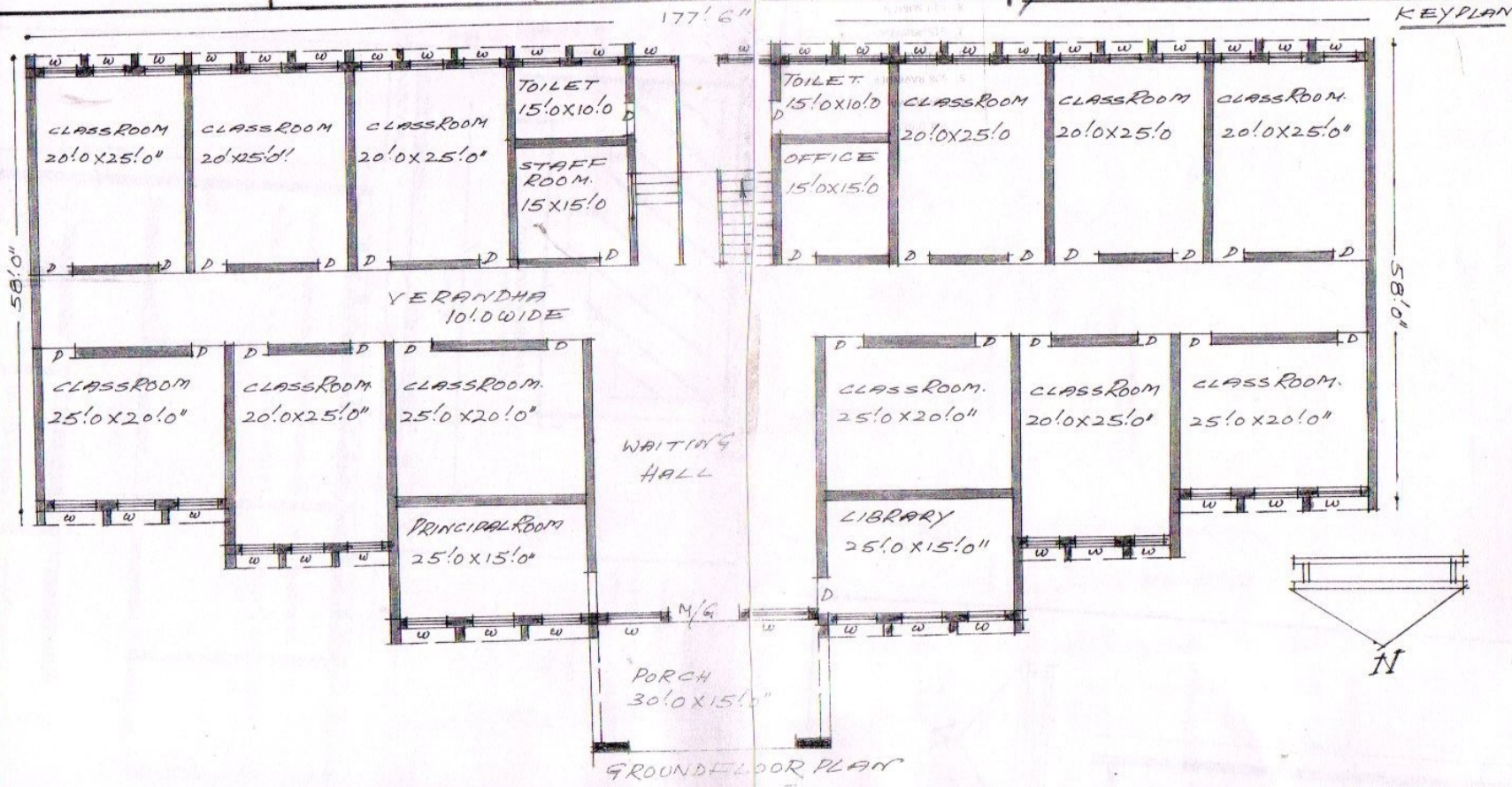
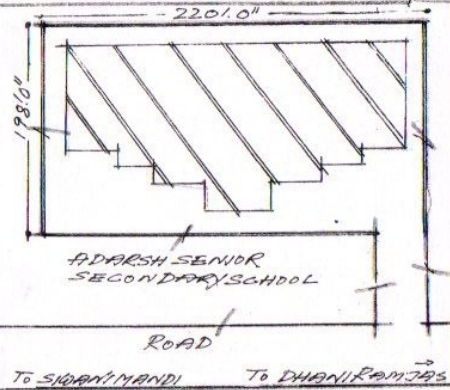
ADARASH COLLEGE OF EDUCATION DHANI  
 RAMTAS ROAD SIWANI MANDI DISTT.  
 BHIWANI HARYANA  
 SOCIETY NAME:- ADARASH EDUCATION  
 SOCIETY DHANI RAMTAS ROAD SIWANI  
 MANDI.  
 PLAN PRE INST TO ADARASH MANAGING  
 COMMITTEE, IN MY OFFICE

ARCHITECT

*REKHA*  
 24/4/08

SIG.

SCHEDULE OF AREA  
 AREA OF LAND =  $1998.0 \times 220.0 = 439560 \text{ SQYD}$   
 OR =  $4046.85 \text{ SQM}$   
 COV AREA OF G.F. =  $12202.83 \text{ SQFT}$  OR  $1133.5 \text{ SQM}$   
 =  $1355.78 \text{ SQYD}$   
 COV AREA OF F.F. =  $12202.83 \text{ SQFT}$   
 =  $1355.78 \text{ SQYD}$   
 TOTAL =  $2711.56 \text{ SQYD}$   
 OPEN AREA OF G.F. =  $31358 \text{ SQFT}$

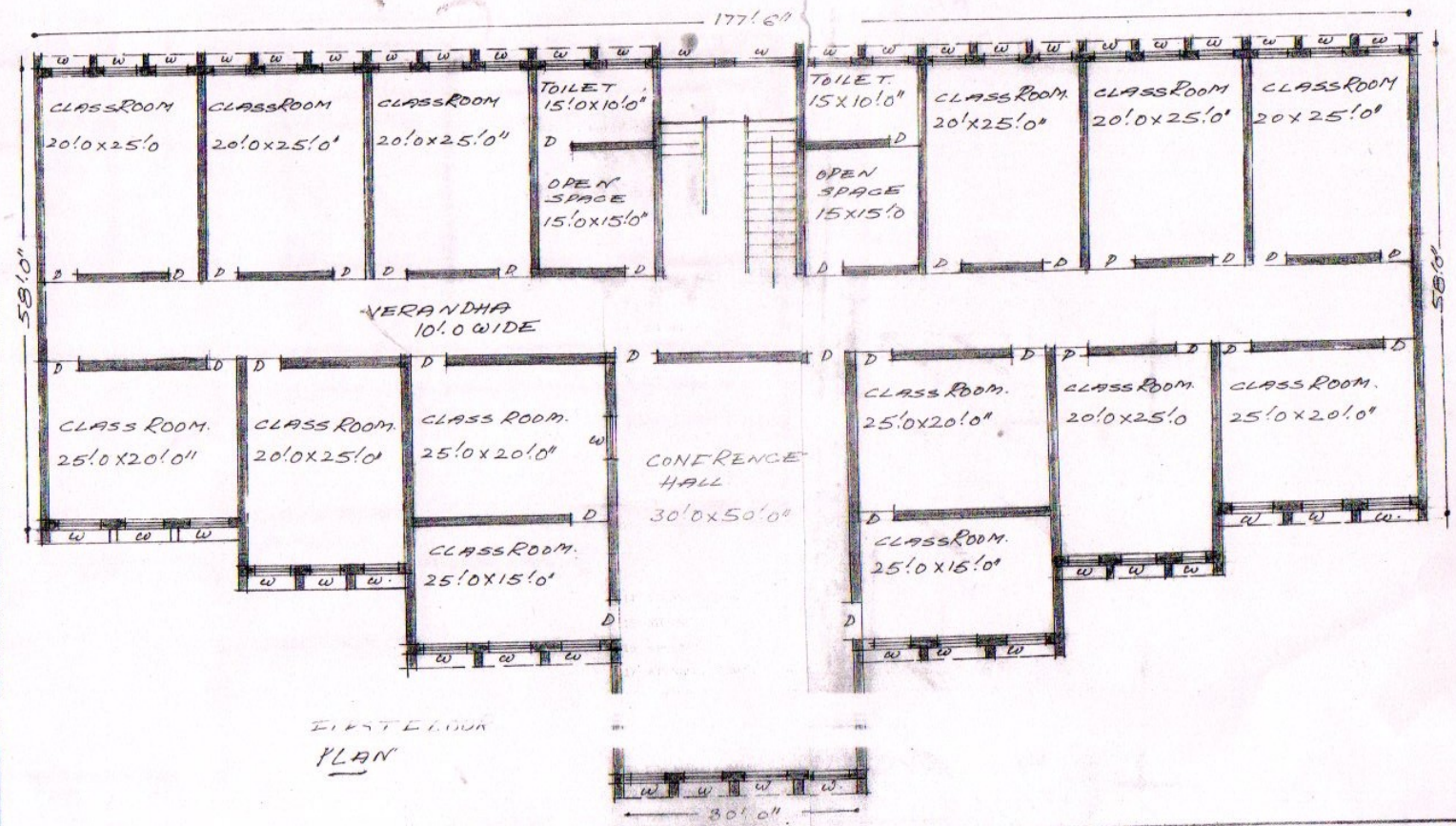
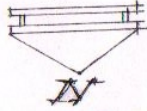




ADARASH COLLEGE OF EDUCATION DHANI RAMJAS ROAD  
 SIWANI MANDI DIST. BHIWANI HARYANA  
 SOCIETY NAME: ADARASH EDUCATION SOCIETY DHANI  
 RAMJAS ROAD SIWANI MANDI DIST. BHIWANI  
 PLAN PRE-INST TO ADARASH MANAGING COMMITTEE  
 IN MY OFFICE

SCHEDULE OF AREA  
 TOTAL AREA OF LAND =  $198'0" \times 220'0" = 43560 \text{ SQYD}$   
 OR  $4046.85 \text{ SQMT}$   
 COVERED AREA =  $12202.83 \text{ SQFT}$  OR  $1133 \text{ SQMT}$   
 =  $1355.78 \text{ SQYD}$   
 COVERED AREA OF F.F. =  $12202.83 \text{ SQFT}$   
 =  $1355.78 \text{ SQYD}$   
 TOTAL =  $2711 \text{ SQYD}$   
 OPEN AREA G.F. =  $31358 \text{ SQFT}$

ARCHITECT  
 RK ANU 19  
 24/4/08



FIRST FLOOR  
 PLAN